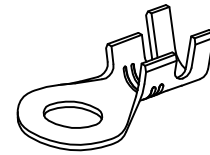
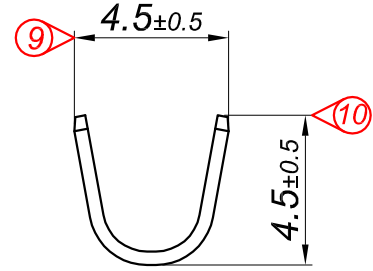
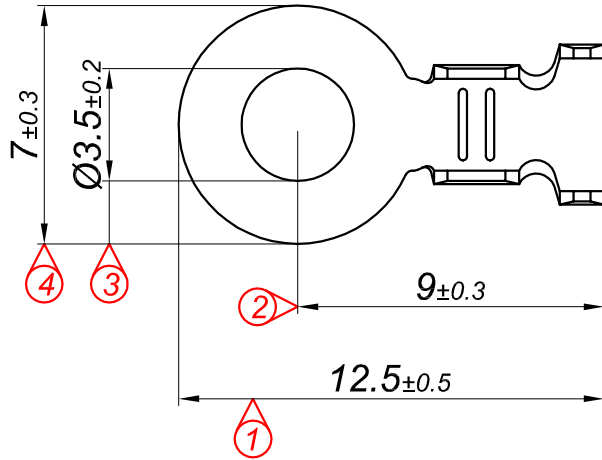
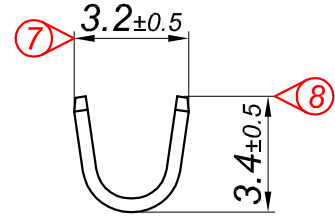
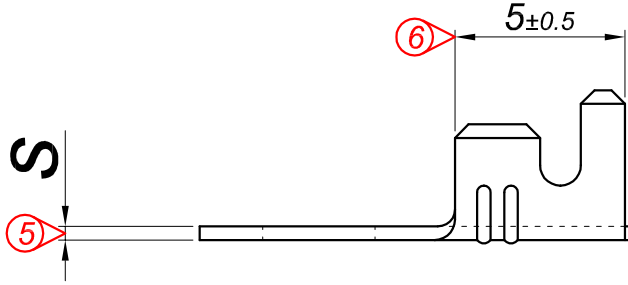


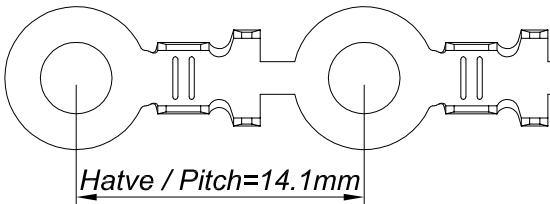
PARÇA KODU PART CODE	PARÇA ADI PART NAME	s ÖLÇÜSÜ (KALINLIK) s MEASURE (THICKNESS)	Malzeme Material	Kaplama / Coating		
				SN	AG	Ni
TŞ 2405.40 DP	1 NO KABLO UÇ Ø3.5 =DP=	0.40±0.05	(CuZn30) Pirinç / Brass	-	-	-
TŞ 2405.40 RP	1 NO KABLO UÇ Ø3.5 =RP=	0.40±0.05	(CuZn30) Pirinç / Brass	-	-	-
TŞ 2405.40 RPK	1 NO KABLO UÇ Ø3.5 =RPK=	0.40±0.05	(CuZn30) Pirinç / Brass	+	-	-
TŞ 2405.40 RÇN	1 NO KABLO UÇ Ø3.5 =RÇN=	0.40±0.05	Paslanmaz Sac(430)	-	-	+
TŞ 2405.50 DP	1 NO KABLO UÇ Ø3.5 =DP=	0.50±0.05	(CuZn30) Pirinç / Brass	-	-	-
TŞ 2405.50 RP	1 NO KABLO UÇ Ø3.5 =RP=	0.50±0.05	(CuZn30) Pirinç / Brass	-	-	-
TŞ 2405.50 RPK	1 NO KABLO UÇ Ø3.5 =RPK=	0.50±0.05	(CuZn30) Pirinç / Brass	+	-	-



Perspektif
Perspective

Kalıp çıkış yönü
Mold output direction

Makara açılım yönü
Reel opening direction




Hatve / Pitch=14.1mm

Ölçek
Scale : 3 / 1

Kablo Kesiti

Wire Section : 0.50 - 1 mm²

Resim üzerinden ölçü almayınız
do not measure on drawing

Tarih / Date	19.07.2013	İmza /Signature	Ölçek /Scale			
Çizen / Desing	M.Yağcı		5 / 1			
Onay / Approval	S.Gölcük		No		Değişiklik / Revision	Tarih/Date
	Parça Adı: Part Name	1 NO KABLO UÇ Ø3.5			Parça Kodu: Part Code	TŞ 2405